



ENTHOUGHT
TEST & MEASUREMENT

Test Automation for

- Characterization
- Modeling
- Design Verification
- Failure Analysis

training • consulting • custom software

SCIENTIFIC COMPUTING SOLUTIONS

Enthought's mission is to significantly improve the way scientific computing is accomplished by providing powerful tools for quantitative data analysis and visualization. By developing with Python, a powerful and concise programming language, we ensure that scientists and engineers are able to implement their ideas easily. Enthought offers software products, training, and consulting services to support clients that range from academic researchers to multinational corporations.

Products	Training	Consulting
 Enthought Python Distribution	Scientific Computing with Python	Rigorous process analysis
 Open source tools	Software Engineering Best Practices	Custom library & application development
 Domain-specific applications & libraries, e.g. ETM	Custom classes	Visualization design

Robust software, powerful products.

Our developers were the primary creators of SciPy and NumPy, two powerful scientific computing libraries. While maintaining these and other open-source tools, we also develop the Enthought Python Distribution (EPD), a kitchen-sink-included distribution of Python especially geared towards end users who work with scientific data. Finally, we regularly expand our domain-specific application and library offerings such as ETM.

Expert training.

Enthought's targeted training courses are geared toward scientists, engineers, and analysts who would like to learn more about how to use Python in their work. In addition to open courses on general scientific computing topics, we also offer on-site customized courses for organizations worldwide.

Specialized solutions for your organization.

Enthought's consulting services provide custom-built software solutions to researchers, government, and commercial organizations. Our team of talented programmers develops powerful computing systems that ease your work and save you money.

TEST & MEASUREMENT EXPERTISE

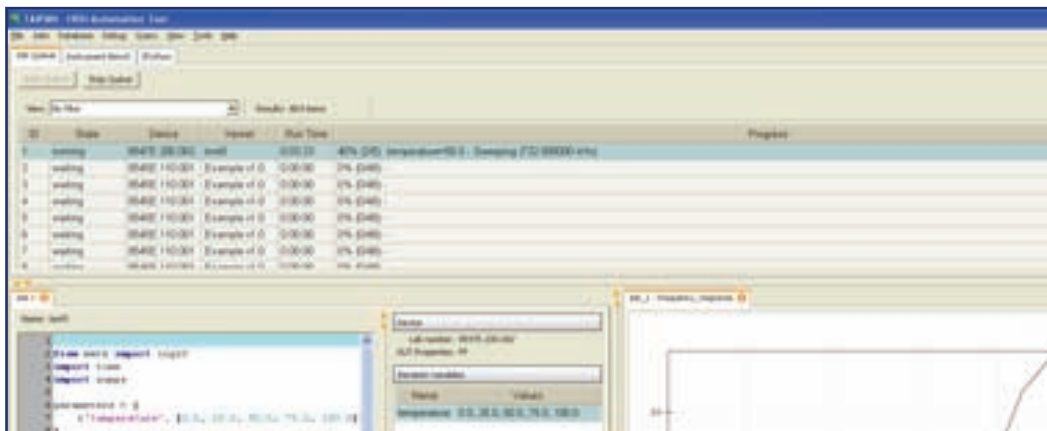


Entought Test and Measurement, founded in 2009, is a specialized Entought division that caters to the testing and measurement market. Because several of our developers have backgrounds in electrical engineering, it was a natural fit for Entought to work with clients in the testing and measurement domain to develop TAIPAN software. We continue to provide consultation and software development services to companies wishing to use TAIPAN or the Entought Python Distribution as components of their test operations.

Taipan

Taipan is a general purpose test executive which covers activities from characterization to production. It can be customized by Entought, our customers or other vendors. Originally developed for High Speed Signal Integrity (HSSI) group, TAIPAN is a powerful test executive application built on the Entought Python Distribution. Taipan features include:

- Re-use of all existing instruments with real-time monitoring
- Report generation for high speed serial data analysis (all standards)
- Embedded DB for long term traceability and multi-site synchronization
- Job scheduling (test sequencing)
- Support of scripted instruments
- Support of vendor-specific instrument productivity features (Calibration, De-Embedding, Protocol, Analysis, etc.)
- Open architecture allows extensibility of any feature by the customer
- Built-in offline development capability



HSSI Lab (a component of TAIPAN)

Customers using EPD or a custom-built Python installation may only need a jump-start to develop their own test automation project. In such situations, the HSSI Lab package saves considerable development time and consulting expense. It includes:

- Libraries for instrument interface via LXI, TCP/IP, GPIB and RS232
- Libraries with instrument control scripts for most vendors and functions.

Application Specific Test (AST)

When complex testing applications are required, our developers can provide consulting services to extend Taipan, customizing it for a specific operation. The AST example below shows software developed to facilitate automated testing and report generation using LeCroy's USB 3.0 hardware.



Consulting for Business Needs Beyond T&M

Entought consults with you to solve your most challenging technical computing problems. We can build complete software applications that help you analyze your data rigorously and visualize it in compelling ways. We are skilled at:

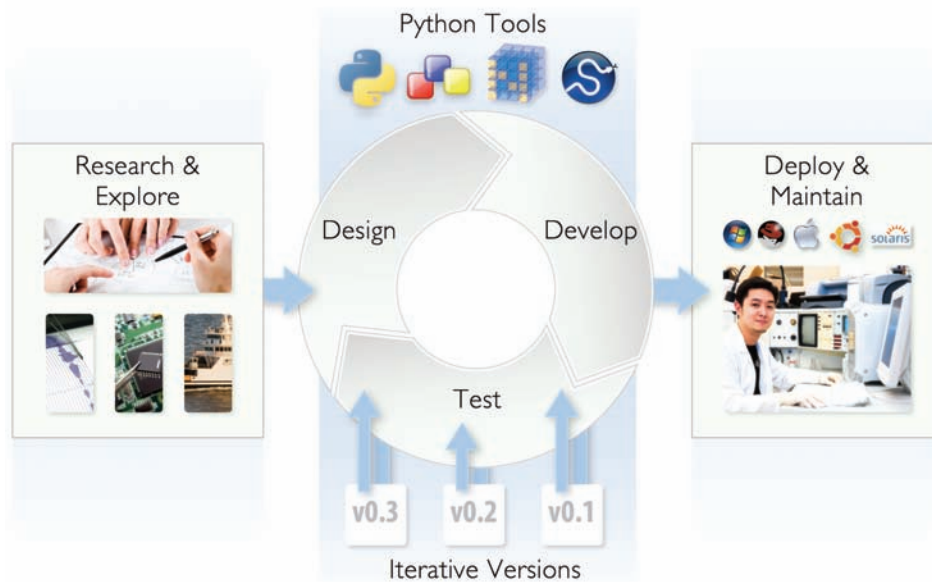
- 2D and 3D interactive visualization
- concurrent programming
- user interface design
- numerical methods and algorithms
- data management
- client/server architectures

Scientists first, developers second.

The majority of our staff has advanced degrees in science and engineering as well as extensive experience in programming, software architecture, and development. We have the domain expertise to solve the toughest scientific data analysis problems along with the development experience to implement systems to meet your business needs.

Build on the right tools.

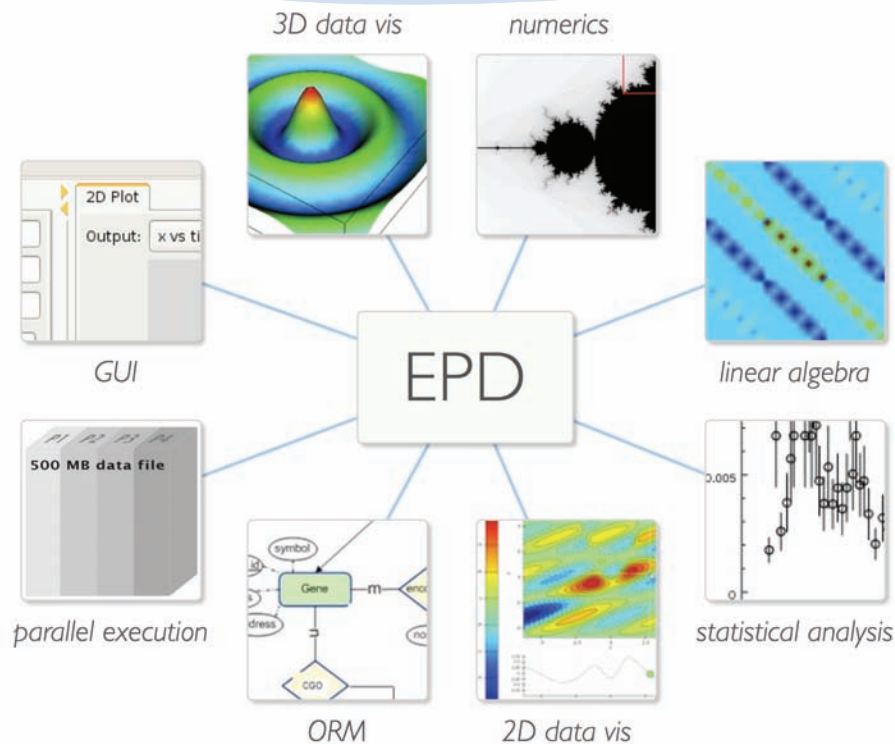
Our extensible and powerful software is built with a coherent Python toolset. Scientists and engineers appreciate Python for its clarity and accessibility, allowing them to write scripts and encode their algorithms with ease. Meanwhile, developers can write robust, full-featured scientific applications using advanced Python tools.



Release early and often.

Collaborating with clients in an iterative development model, we deliver usable versions of the application early and often. Continual client review allows us to evaluate performance and refine requirements, enhancing the quality and utility of the end product.

ENTHOUGHT PYTHON DISTRIBUTION



The Entthought Python Distribution (EPD) provides an enterprise-level Python environment bundled with additional modules that make it ideal for interactive technical computing and cross-platform rapid application development. Our complete set of Python tools allow everyone in your organization to perform complex scientific, engineering, and statistical analyses and communicate results with compelling visualizations. EPD is available for Windows, Mac OS X, RedHat, and Solaris.



**ENTHOUGHT
PYTHON
DISTRIBUTION**

EPD contains the building blocks for test automation.

The Entthought Python Distribution is an audited and supported collection of open source solutions. If you would like to automate any combination of instruments and peripherals with any set of communication protocols on any OS, EPD offers an ideal framework with which to work. Cost and contents are identical for any operating system. Free trial downloads are available at www.entthought.com.

Enthought, Inc.

Enthought was founded in 2001 by two engineers with a passion for scientific computing. Since then, the company has grown to nearly two dozen employees — many with advanced degrees in Computer Science, Engineering, or Mathematics. Based in Austin, Texas, Enthought serves national and multi-national clients including Airbus, ConocoPhillips, Freescale, GDF-Suez, Jet Propulsion Laboratory, Los Alamos National Lab, Northrup Grumman, U.S. Army Research Lab, Oak Ridge National Lab, Lockheed Martin, Rackspace, Doosan Babcock, Shell, Merrill Lynch, and Xilinx.

Enthought, Inc.
515 Congress Ste. 2100
Austin, TX 78701
512.536.1057
www.enthought.com

